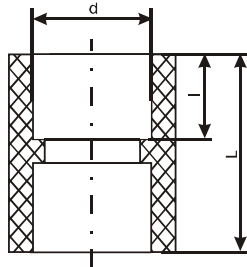
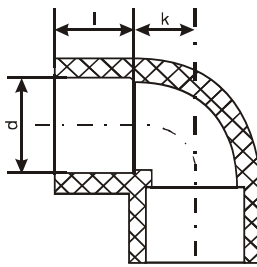


МУФА PN 25
SOCKET PN 25

БДС EN ISO 15874



| Ном. No Nom. No | d mm | L mm | l mm | Брой в кашон Pieces in a box |
|--------------------|---------|---------|---------|---------------------------------|
| 09110012 | 20 | 32,0 | 14,5 | 300 A |
| 09110022 | 25 | 35,0 | 16,0 | 300 A |
| 09110032 | 32 | 39,0 | 18,0 | 100 A |
| 09110042 | 40 | 44,0 | 20,5 | 100 A |

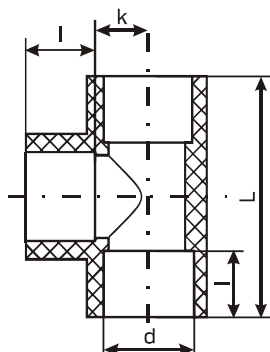
КОЛЯНО 90° PN 25
ELBOW 90° PN 25


| Ном. No Nom. No | d mm | k mm | l mm | Брой в кашон Pieces in a box |
|--------------------|---------|---------|---------|---------------------------------|
| 09120012 | 20 | 11,0 | 14,5 | 250 A |
| 09120022 | 25 | 13,5 | 16,0 | 150 A |
| 09120032 | 32 | 17,0 | 18,0 | 100 A |
| 09120042 | 40 | 21,0 | 20,5 | 50 A |

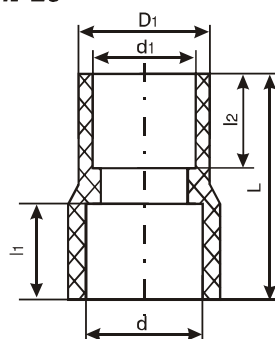


СВЪРЗВАЩИ ЧАСТИ ОТ PP-R
FITTINGS OF PP-R
ТРОЙНИК 90° PN 25
TEE 90° PN 25

БДС EN ISO 15874



| Ном. No Nom. No | d mm | l mm | L mm | k mm | Брой в кашон Pieces in a box |
|--------------------|---------|---------|---------|---------|---------------------------------|
| 09130012 | 20 | 14,5 | 51 | 11,0 | 150 A |
| 09130022 | 25 | 16,0 | 59 | 13,5 | 100 A |
| 09130032 | 32 | 18,0 | 70 | 17,0 | 50 A |
| 09130042 | 40 | 20,5 | 83 | 21,0 | 30 A |

НАМАЛИТЕЛ PN 25
REDUCER PN 25


| Ном. No Nom. No | DN | d ₁ mm | d ₂ mm | l ₁ mm | l ₂ mm | Брой в кашон Pieces in a box |
|--------------------|-------|----------------------|----------------------|----------------------|----------------------|---------------------------------|
| 09150012 | 25x20 | 25 | 20 | 16,0 | 14,5 | 200 A |
| 09150022 | 32x20 | 32 | 20 | 18,0 | 14,5 | 200 A |
| 09150032 | 32x25 | 32 | 25 | 18,0 | 16,0 | 200 A |
| 09150042 | 40x20 | 40 | 20 | 20,5 | 14,5 | 200 A |
| 09150052 | 40x25 | 40 | 25 | 20,5 | 16,0 | 200 A |
| 09150062 | 40x32 | 40 | 32 | 20,5 | 18,0 | 200 A |

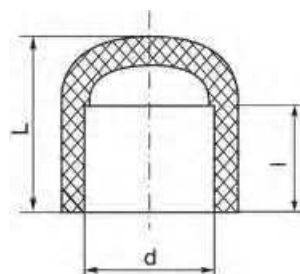


ПРЕХОД (РЕДУЦИРАЩА МУФА) PN 25
REDUCER PN 25

БДС EN ISO 15874



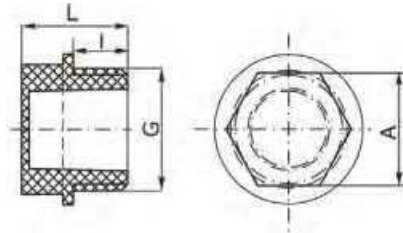
| Ном. No Nom. No | DN | d ₁ mm | d ₂ mm | l ₁ mm | l ₂ mm | Брой в кашон Pieces in a box |
|--------------------|-------|----------------------|----------------------|----------------------|----------------------|---------------------------------|
| 09150072 | 25x20 | 25 | 20 | 16,0 | 14,5 | 200 A |
| 09150082 | 32x20 | 32 | 20 | 18,0 | 14,5 | 200 A |
| 09150092 | 32x25 | 32 | 25 | 18,0 | 16,0 | 200 A |

КАПАЧКА PN 25
CAP PN 25


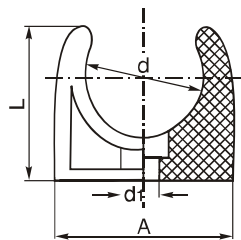
| Ном. No Nom. No | d mm | l mm | L mm | Брой в кашон Pieces in a box |
|--------------------|---------|---------|---------|---------------------------------|
| 09170312 | 20 | 14,5 | 22 | 400 A |
| 09170322 | 25 | 16,0 | 24 | 400 A |
| 09170332 | 32 | 18,0 | 26 | 200 A |
| 09170342 | 40 | 20,5 | 36 | 100 A |



БДС EN ISO 15874

ТАПА PN 25**CAP MALE PN 25**

| Ном. No Nom. No | G mm | l mm | L mm | A mm | Брой в кашон Pieces in a box |
|--------------------|---------|---------|---------|---------|---------------------------------|
| 09172012 | ½" | 13 | 23 | 22 | 400 А |
| 09172022 | ¾" | 13 | 23 | 24 | 400 А |

МОНТАЖНА СКОБА**PIPE CLAMP**

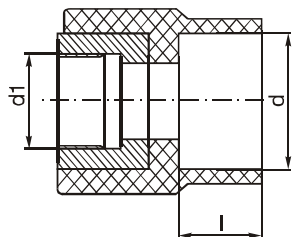
| Ном. No Nom. No | d mm | d ₁ mm | L mm | A mm | Брой в кашон Pieces in a box |
|--------------------|---------|----------------------|---------|---------|---------------------------------|
| 09170012 | 20 | 5 | 28 | 32 | 400 А |
| 09170022 | 25 | 5 | 36 | 39 | 400 А |
| 09170032 | 32 | 5 | 40 | 47 | 300 А |
| 09170042 | 40 | 5 | 46 | 56 | 300 А |



СВЪРЗВАЩИ ЧАСТИ ОТ PP-R FITTINGS OF PP-R

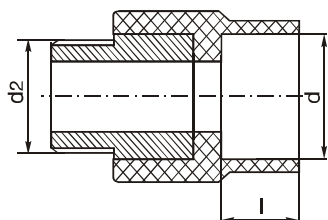
СЪЕДИНИТЕЛ С ВЪТРЕШНА РЕЗБА PN 25 UNION, FEMALE THREAD INSERT PN 25

БДС EN ISO 15874



| Ном. No Nom. No | d mm | l mm | d1 mm | Брой в кашон Pieces in a box |
|--------------------|---------|---------|----------|---------------------------------|
| 09111012 | 20 | 14,5 | R ½" | 100 D |
| 09111022 | 20 | 14,5 | R ¾" | 100 D |
| 09111032 | 25 | 16,0 | R ¾" | 100 D |
| 09111042 | 32 | 18,0 | R 1" | 50 D |
| 09111052 | 40 | 20,5 | R 1½" | 30 D |

СЪЕДИНИТЕЛ С ВЪНШНА РЕЗБА PN 25 UNION, MALE THREAD INSERT PN 25

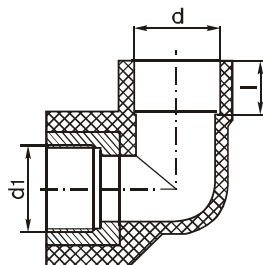


| Ном. No Nom. No | d mm | l mm | d1 mm | Брой в кашон Pieces in a box |
|--------------------|---------|---------|----------|---------------------------------|
| 09112012 | 20 | 14,5 | G ½" | 100 D |
| 09112022 | 25 | 16,0 | G ½" | 100 D |
| 09112032 | 25 | 16,0 | G ¾" | 100 D |
| 09112042 | 32 | 18,0 | G 1" | 40 D |
| 09112052 | 40 | 20,5 | G 1½" | 30 D |

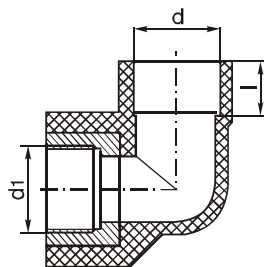


СВЪРЗВАЩИ ЧАСТИ ОТ PP-R
FITTINGS OF PP-R
КОЛЯНО 90° С ВЪТРЕШНА РЕЗБА PN 25
ELBOW 90°, FEMALE THREAD INSERT PN 25

БДС EN ISO 15874



| Ном. No Nom. No | d mm | l mm | d1 mm | Брой в кашон Pieces in a box |
|--------------------|---------|---------|----------|---------------------------------|
| 09121012 | 20 | 14,5 | R ½" | 100 D |
| 09121022 | 20 | 14,5 | R ¾" | 100 D |
| 09121032 | 25 | 16,0 | R ½" | 100 D |
| 09121042 | 25 | 16,0 | R ¾" | 50 D |
| 09121052 | 32 | 18,0 | R ¾" | 50 D |
| 09121062 | 32 | 18,0 | R 1" | 50 D |

КОЛЯНО 90° СЪС СКОБА С
ВЪТРЕШНА РЕЗБА PN 25
ELBOW 90°, FEMALE THREAD INSERT
WITH EYES PN 25


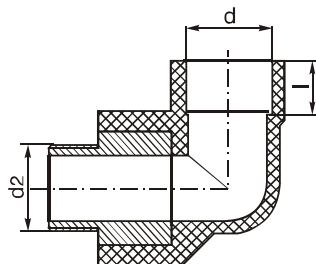
| Ном. No Nom. No | d mm | l mm | d1 mm | Брой в кашон Pieces in a box |
|--------------------|---------|---------|----------|---------------------------------|
| 09121072 | 20 | 14,5 | R ½" | 100 D |
| 09121082 | 25 | 16,0 | R ½" | 100 D |



СВЪРЗВАЩИ ЧАСТИ ОТ PP-R FITTINGS OF PP-R

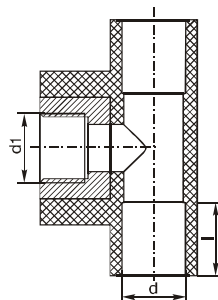
КОЛЯНО 90° С ВЪНШНА РЕЗБА PN 25 ELBOW 90°, MALE THREAD INSERT PN 25

БДС EN ISO 15874



| Ном. No Nom. No | d mm | l mm | d2 mm | Брой в кашон Pieces in a box |
|--------------------|---------|---------|----------|---------------------------------|
| 09122012 | 20 | 14,5 | G 1/2" | 100 D |
| 09122022 | 25 | 16,0 | G 1/2" | 100 D |
| 09122032 | 25 | 16,0 | G 3/4" | 50 D |
| 09122042 | 32 | 18,0 | G 3/4" | 50 D |

ТРОЙНИК 90° С ВЪТРЕШНА РЕЗБА PN 25 TEE 90°, FEMALE THREAD INSERT PN 25

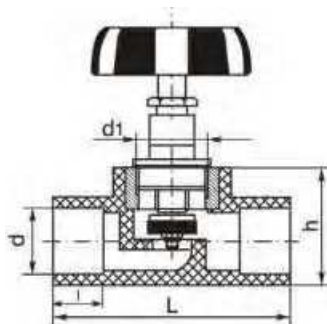


| Ном. No Nom. No | d mm | l mm | d1 mm | Брой в кашон Pieces in a box |
|--------------------|---------|---------|----------|---------------------------------|
| 09131012 | 20 | 14,5 | R 1/2" | 100 D |
| 09131032 | 25 | 16,0 | R 1/2" | 80 D |
| 09131052 | 32 | 18,0 | R 3/4" | 50 D |

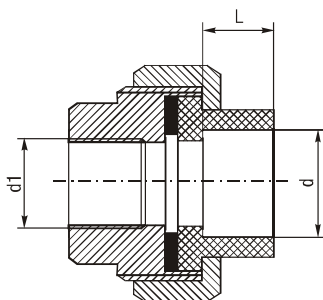


СВЪРЗВАЩИ ЧАСТИ ОТ PP-R
FITTINGS OF PP-R
СПИРАТЕЛЕН КРАН PN 25
STOP VALVE PN 25

БДС EN ISO 15874



| Ном. No Nom. No | d mm | l mm | d1 mm | L mm | h mm | Брой в капон Pieces in a box |
|--------------------|---------|---------|----------|---------|---------|---------------------------------|
| 09181012 | 20 | 14,5 | R ½" | 60 | 41 | 50 D |
| 09181022 | 25 | 16,0 | R ¾" | 70 | 48 | 40 D |
| 09181032 | 32 | 18,0 | R 1" | 94 | 59 | 25 D |

ХОЛЕНДЪР С ВЪТРЕШНА РЕЗБА
HOLLANDER FEMALE THREAD INSERT


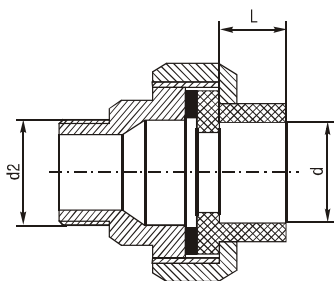
| Ном. No Nom. No | d mm | L mm | d1 mm | Брой в капон Pieces in a box |
|--------------------|---------|---------|----------|---------------------------------|
| 09141012 | 20 | 14,5 | R ½" | 100 D |
| 09141022 | 25 | 16,0 | R ¾" | 80 D |
| 09141032 | 32 | 18,0 | R 1" | 50 D |
| 09141042 | 40 | 20,5 | R 1¼" | 30 D |



СВЪРЗВАЩИ ЧАСТИ ОТ PP-R FITTINGS OF PP-R

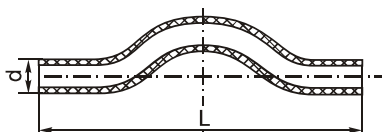
ХОЛЕНДЪР С ВЪНШНА РЕЗБА HOLLANDER MALE THREAD INSERT

БДС EN ISO 15874



| Ном. No Nom. No | d mm | L mm | d2 mm | Брой в кашон Pieces in a box |
|--------------------|---------|---------|----------|---------------------------------|
| 09142012 | 20 | 14,5 | G ½" | 100 D |
| 09142022 | 25 | 16,0 | G ¾" | 80 D |
| 09142032 | 32 | 18,0 | G 1" | 50 D |
| 09142042 | 40 | 20,5 | G 1¼" | 30 D |

ПРЕХВЪРЛЯЩА ТРЪБА PN 20 BENT PIPE PN 20

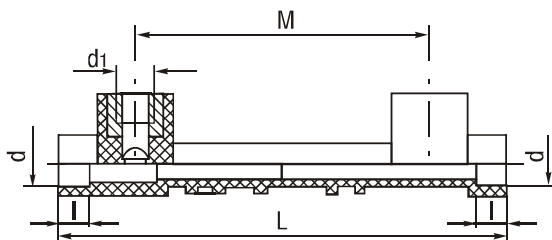


| Ном. No Nom. No | d mm | L mm | Брой в кашон Pieces in a box |
|--------------------|---------|---------|---------------------------------|
| 09160012 | 20 | 300 | 100 D |
| 09160022 | 25 | 300 | 70 D |
| 09160032 | 32 | 300 | 40 D |
| 09160042 | 40 | 390 | 40 E |



**СВЪРЗВАЩИ ЧАСТИ ОТ PP-R
FITTINGS OF PP-R**
**УНИВЕРСАЛЕН КОМПЛЕКТ ЗА БАТЕРИЯ
UNIVERSAL COMPLETE FOR BLENDER**

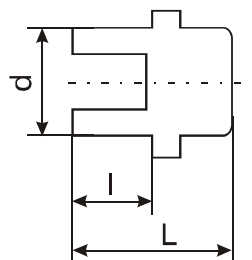
БДС EN ISO 15874



$M - 151 \text{ mm}, 137 \text{ mm}, 101 \text{ mm}.$



| Ном. No Nom. No | d mm | l mm | d1 mm | L mm | Брой в кашон Pieces in a box |
|--------------------|---------|---------|----------|---------|---------------------------------|
| 09181312 | 20 | 14,5 | R 1/2" | 226 | 16 D |

**ТАПА ЗА УНИВЕРСАЛЕН КОМПЛЕКТ ЗА БАТЕРИЯ
CAP FOR UNIVERSAL COMPLETE FOR BLENDER**


| Ном. No Nom. No | d mm | l mm | L mm | Брой в кашон Pieces in a box |
|--------------------|---------|---------|---------|---------------------------------|
| 09181322 | 20 | 14,5 | 40 | 700 A |

